

Advanced 6th Grade Daily Warmup

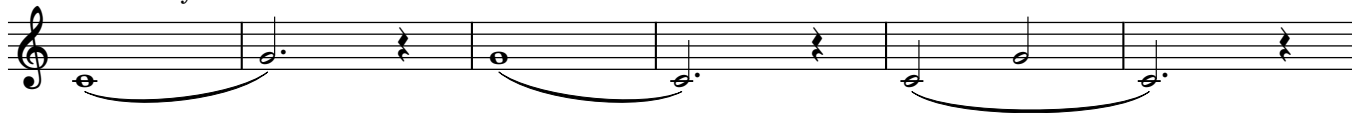
Clarinet in B \flat

A. Kelly

5 Note Countdown



Flexibility Variation #1



Flexibility Variation #2



Combined Flexibility

Musical notation for the 'Combined Flexibility' exercise, consisting of two staves. The first staff features a melodic line with a long slur spanning across several measures, including dotted notes and rests. The second staff provides a rhythmic accompaniment with eighth notes and rests.

Advanced 2nds

Musical notation for the 'Advanced 2nds' exercise, consisting of two staves. The first staff shows a sequence of eighth notes with a rest in the second measure. The second staff shows a sequence of eighth notes with a rest in the second measure, ending with a final note on a lower pitch.

Advanced 3rds

Musical notation for the 'Advanced 3rds' exercise, consisting of two staves. The first staff shows a sequence of eighth notes with a rest in the second measure. The second staff shows a sequence of eighth notes with a rest in the second measure, ending with a final note on a lower pitch.

Advanced 4ths

Musical notation for the 'Advanced 4ths' exercise, consisting of two staves. The first staff shows a sequence of eighth notes with a rest in the second measure. The second staff shows a sequence of eighth notes with a rest in the second measure, ending with a final note on a lower pitch.

Advanced 5ths

Musical notation for the 'Advanced 5ths' exercise, consisting of two staves. The first staff shows a sequence of eighth notes with a rest in the second measure. The second staff shows a sequence of eighth notes with a rest in the second measure, ending with a final note on a lower pitch.

Scale Exercise 1: Concert Bb Major

Musical notation for Scale Exercise 1: Concert Bb Major, first line. It consists of a single staff with a treble clef and a key signature of two flats (Bb). The notes are: Bb, C, D, Eb, F, G, Ab, Bb, C, D, Eb, F, G, Ab, Bb. Each note is followed by a fermata.

12

Musical notation for Scale Exercise 1: Concert Bb Major, second line. It consists of a single staff with a treble clef and a key signature of two flats (Bb). The notes are: Bb, C, D, Eb, F, G, Ab, Bb. Each note is followed by a fermata.

Scale Exercise 2: Concert Bb Major Scale

Musical notation for Scale Exercise 2: Concert Bb Major Scale, first line. It consists of a single staff with a treble clef and a key signature of two flats (Bb). The notes are: Bb, C, D, Eb, F, G, Ab, Bb. Each note is followed by a fermata.

Musical notation for Scale Exercise 2: Concert Bb Major Scale, second line. It consists of a single staff with a treble clef and a key signature of two flats (Bb). The notes are: Bb, C, D, Eb, F, G, Ab, Bb. Each note is followed by a fermata.

Scale Exercise 1: Concert G Minor Scale

Musical notation for Scale Exercise 1: Concert G Minor Scale, first line. It consists of a single staff with a treble clef and a key signature of one flat (G minor). The notes are: G, Ab, Bb, C, D, Eb, F, G. Each note is followed by a fermata.

Musical notation for Scale Exercise 1: Concert G Minor Scale, second line. It consists of a single staff with a treble clef and a key signature of one flat (G minor). The notes are: G, Ab, Bb, C, D, Eb, F, G. Each note is followed by a fermata.

Scale Exercise 2: Concert G Minor Scale

Musical notation for Scale Exercise 2: Concert G Minor Scale, first line. It consists of a single staff with a treble clef and a key signature of one flat (G minor). The notes are: G, Ab, Bb, C, D, Eb, F, G. Each note is followed by a fermata.

Chromatic Scale

Musical notation for Chromatic Scale. It consists of a single staff with a treble clef and a key signature of one flat (G minor). The notes are: G, Ab, Bb, C, D, Eb, F, G, Ab, Bb, C, D, Eb, F, G. Each note is followed by a fermata.

10

Musical notation for Chromatic Scale, second line. It consists of a single staff with a treble clef and a key signature of one flat (G minor). The notes are: G, Ab, Bb, C, D, Eb, F, G. Each note is followed by a fermata.