

Advanced 6th Grade Daily Warmup

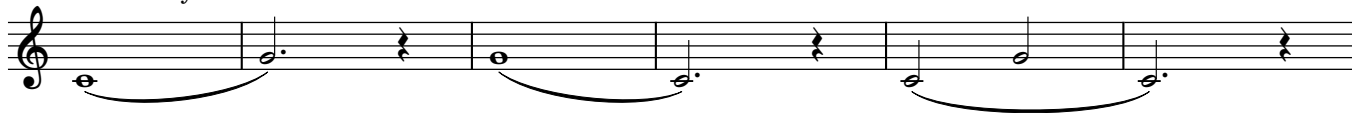
Trumpet in B \flat

A. Kelly

5 Note Countdown



Flexibility Variation #1



Flexibility Variation #2



Combined Flexibility

Musical notation for the 'Combined Flexibility' exercise, consisting of two staves. The first staff features a melodic line with a long slur spanning across several measures, including dotted notes and rests. The second staff provides a rhythmic accompaniment with eighth notes and rests.

Advanced 2nds

Musical notation for the 'Advanced 2nds' exercise, consisting of two staves. The first staff shows a sequence of eighth notes with a rest in the second measure. The second staff shows a sequence of eighth notes with a rest in the second measure, ending with a final note on a lower pitch.

Advanced 3rds

Musical notation for the 'Advanced 3rds' exercise, consisting of two staves. The first staff shows a sequence of eighth notes with a rest in the second measure. The second staff shows a sequence of eighth notes with a rest in the second measure, ending with a final note on a lower pitch.

Advanced 4ths

Musical notation for the 'Advanced 4ths' exercise, consisting of two staves. The first staff shows a sequence of eighth notes with a rest in the second measure. The second staff shows a sequence of eighth notes with a rest in the second measure, ending with a final note on a lower pitch.

Advanced 5ths

Musical notation for the 'Advanced 5ths' exercise, consisting of two staves. The first staff shows a sequence of eighth notes with a rest in the second measure. The second staff shows a sequence of eighth notes with a rest in the second measure, ending with a final note on a lower pitch.

Scale Exercise 1: Concert Bb Major

Musical notation for Scale Exercise 1: Concert Bb Major, first line. It consists of a single staff with a treble clef. The notes are: C4 (quarter), C4 (quarter), D4 (quarter), D4 (quarter), E4 (quarter), E4 (quarter), F4 (quarter), F4 (quarter), G4 (quarter), G4 (quarter), A4 (quarter), A4 (quarter), Bb4 (quarter), Bb4 (quarter), C5 (quarter).

12

Musical notation for Scale Exercise 1: Concert Bb Major, second line. It consists of a single staff with a treble clef. The notes are: C5 (quarter), Bb4 (quarter), Ab4 (quarter), G4 (quarter), F4 (quarter), E4 (quarter), D4 (quarter), C4 (quarter).

Scale Exercise 2: Concert Bb Major Scale

Musical notation for Scale Exercise 2: Concert Bb Major Scale, first line. It consists of a single staff with a treble clef. The notes are: C4 (quarter), D4 (quarter), E4 (quarter), F4 (quarter), G4 (quarter), A4 (quarter), Bb4 (quarter), C5 (quarter).

Musical notation for Scale Exercise 2: Concert Bb Major Scale, second line. It consists of a single staff with a treble clef. The notes are: Bb4 (quarter), Ab4 (quarter), G4 (quarter), F4 (quarter), E4 (quarter), D4 (quarter), C4 (quarter), Bb4 (quarter).

Scale Exercise 1: Concert G Minor Scale

Musical notation for Scale Exercise 1: Concert G Minor Scale, first line. It consists of a single staff with a treble clef. The notes are: G4 (quarter), G4 (quarter), Ab4 (quarter), Ab4 (quarter), Bb4 (quarter), Bb4 (quarter), C5 (quarter), C5 (quarter), D5 (quarter), D5 (quarter), E5 (quarter), E5 (quarter), F5 (quarter), F5 (quarter), G5 (quarter).

Musical notation for Scale Exercise 1: Concert G Minor Scale, second line. It consists of a single staff with a treble clef. The notes are: G5 (quarter), F5 (quarter), E5 (quarter), D5 (quarter), C5 (quarter), Bb4 (quarter), Ab4 (quarter), G4 (quarter).

Scale Exercise 2: Concert G Minor Scale

Musical notation for Scale Exercise 2: Concert G Minor Scale, first line. It consists of a single staff with a treble clef. The notes are: G4 (quarter), Ab4 (quarter), Bb4 (quarter), C5 (quarter), D5 (quarter), E5 (quarter), F5 (quarter), G5 (quarter).

Musical notation for Chromatic Scale. It consists of a single staff with a treble clef. The notes are: G4 (quarter), Ab4 (quarter), Bb4 (quarter), C5 (quarter), D5 (quarter), E5 (quarter), F5 (quarter), G5 (quarter), F5 (quarter), E5 (quarter), D5 (quarter), C5 (quarter), Bb4 (quarter), Ab4 (quarter), G4 (quarter).

10

Musical notation for Chromatic Scale, second line. It consists of a single staff with a treble clef. The notes are: G4 (quarter), Ab4 (quarter), Bb4 (quarter), C5 (quarter), D5 (quarter), E5 (quarter), F5 (quarter), G5 (quarter).